



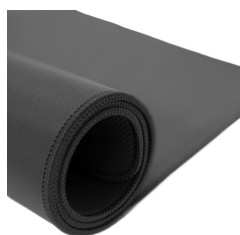
SHIKORO L

SHIKORO-L / ESHARK

White Shark SHIKORO L is a gaming mousepad designed for users who want a stable, precise and fast surface for gaming, work or everyday use. With **450x400x3mm** dimensions, a water-resistant surface and a non-slip rubber base, SHIKORO L provides an excellent balance of speed and control with enough space for precise mouse movements.

- **L-size gaming mousepad** for precise gaming, work and everyday use
- **450x400x3mm dimensions** for enough space during mouse movements
- **3 mm thickness** for a stable and comfortable feel during use
- **Water-resistant surface** for more practical everyday use
- **Optimal balance of speed and control** for precise and fast mouse movements
- **Smooth contact surface** for reduced friction and fluid mouse gliding
- **Non-slip rubber base** for stability during gaming and work
- **Cellular rubber material** for a firm and reliable base
- **Stitched edges** that help prevent the surface layer from peeling
- **Black design** that fits easily into gaming and office setups

With its practical dimensions, water-resistant surface and stable non-slip base, **White Shark SHIKORO L** is an excellent choice for users who want a reliable gaming mousepad for fast, precise and comfortable mouse control.



SPECIFICATIONS

General attributes

Color	Black
Material	Foam rubber
Dimensions (mm)	450x400
Non-slip surface	Yes
Thickness (mm)	3
Warranty	60-month warranty
Model Classification	SHIKORO

LOGISTIČKI PODACI

Transportno pakiranje

Shipping packaging - Quantity	30
Shipping packaging - Unit	com
Shipping packaging - Weight	15
Shipping packaging - Length	52.5
Shipping packaging - Width	44
Shipping packaging - Height	47.5
Palette - Quantity	240

Komercijalno pakiranje

Commercial packaging - Quantity	Yes
Commercial packaging - Unit	com
Commercial packaging - Weight	0.458
Commercial packaging - Length	8
Commercial packaging - Width	8
Commercial packaging - Height	46