

# KHUFU I

## KHUFU-I / WHITE SHARK

White Shark KHUFU-I is a desktop monitor mount designed for a cleaner setup, better ergonomics and greater flexibility while working or gaming.

- Supports **1 monitor from 17" to 40"**
- **Load capacity up to 12 kg** for stable and secure use
- Compatible with **VESA 75x75 and 100x100** standards
- **Vertical tilt from +80° to -45°** for easy adjustment of the ideal viewing angle
- **Horizontal swivel from +90° to -90°** and **screen rotation from +180° to -180°** for full positioning flexibility
- **Clamp or grommet installation** for easier desk mounting options
- **Cable guides** for a cleaner and more organized workspace
- Modern design that fits seamlessly into gaming and office setups

**KHUFU-I** delivers a strong balance of stability, ergonomics and functionality for everyday work, gaming and an organized desk setup.

## SPECIFICATIONS

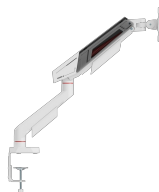
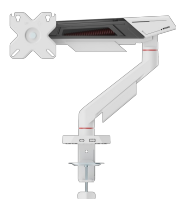
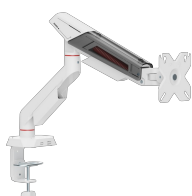
### General attributes

Stand type	Desk stand
Load capacity (kg)	12 kg/26.4 lbs (per monitor)
Vertical tilt	+80° to -45°
For curved screens	Yes
Cable guides	Yes
Color	Matte White
Warranty	36-month warranty
Recommended screen size	17 - 40 (43 - 102 cm)
VESA	75x75,100x100
Horizontal swivel	+90° to -90°
Detachable VESA plate	No
Installation	Stega / rupa (stol)
Material	Steel, aluminum, plastic
Dimensions (mm)	120x508x587
Finishing	Powder coating
Screen Rotation	+180° to -180°
Arm reach (mm)	455
Min Charging Power (W)	0.00
Primary Battery Voltage (V)	0.00
Secondary Battery Voltage (V)	0.00
Model Classification	KHUFU

## LOGISTIČKI PODACI

### Transportno pakiranje

Shipping packaging - Quantity	6
Shipping packaging - Unit	com
Shipping packaging - Weight	19.5
Shipping packaging - Length	40.5
Shipping packaging - Width	31
Shipping packaging - Height	35





---

<b>Palette - Quantity</b>	150
---------------------------	-----

---

**Komercialno pakiranje**

---

<b>Commercial packaging - Quantity</b>	Yes
--	-----

---

<b>Commercial packaging - Unit</b>	com
------------------------------------	-----

---

<b>Commercial packaging - Weight</b>	3.176
--------------------------------------	-------

---

<b>Commercial packaging - Length</b>	39
--------------------------------------	----

---

<b>Commercial packaging - Width</b>	11
-------------------------------------	----

---

<b>Commercial packaging - Height</b>	15
--------------------------------------	----

---