

KHUFU II

KHUFU-II / WHITE SHARK

White Shark KHUFU-II is a dual monitor desktop mount designed for better ergonomics, more desk space and a cleaner gaming or work setup.

- Supports **2 monitors** for more efficient multitasking and better workspace organization
- Suitable for screens from approximately **17" to 32"/35"**
- **Load capacity of up to 9-12 kg per monitor** for stable and secure use
- Compatible with **VESA 75x75 and 100x100** standards
- **Gas spring mechanism** for easier and more precise monitor adjustment
- **Tilt, swivel and rotation** functions for an ideal viewing angle and added flexibility
- **Clamp or grommet installation** for simple desk mounting
- Helps free up desk space and maintain a cleaner, more organized setup

KHUFU-II delivers a strong balance of functionality, ergonomics and modern style for users who work or game with a dual monitor setup.

SPECIFICATIONS

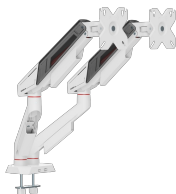
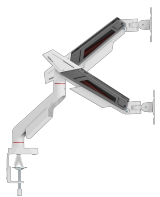
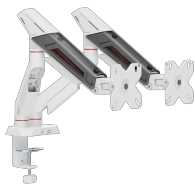
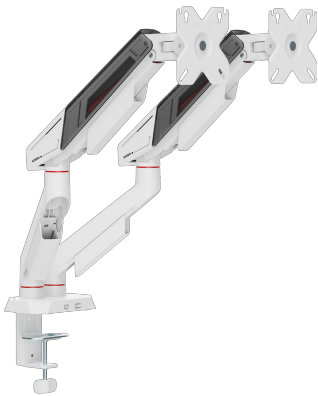
General attributes

Stand type	Desk stand
Load capacity (kg)	12 kg/26.4 lbs (per monitor)
Vertical tilt	+80° to -45°
For curved screens	Yes
Cable guides	Yes
Color	Matte White
Warranty	36-month warranty
Recommended screen size	17 - 35 (43 - 90 cm)
VESA	75x75,100x100
Horizontal swivel	+90° to -90°
Detachable VESA plate	No
Installation	Stega / rupa (stol)
Material	Steel, aluminum, plastic
Dimensions (mm)	977x106x586
Finishing	Powder coating
Screen Rotation	+180° to -180°
Arm reach (mm)	455
Min Charging Power (W)	0.00
Primary Battery Voltage (V)	0.00
Secondary Battery Voltage (V)	0.00
Model Classification	KHUFU

LOGISTIČKI PODACI

Transportno pakiranje

Shipping packaging - Quantity	4
Shipping packaging - Unit	com
Shipping packaging - Weight	22.7
Shipping packaging - Length	48
Shipping packaging - Width	40.5





Shipping packaging - Height	26
Palette - Quantity	138
Komercialno pakiranje	
Commercial packaging - Quantity	Yes
Commercial packaging - Unit	com
Commercial packaging - Weight	5.65
Commercial packaging - Length	39.5
Commercial packaging - Width	12
Commercial packaging - Height	23.5